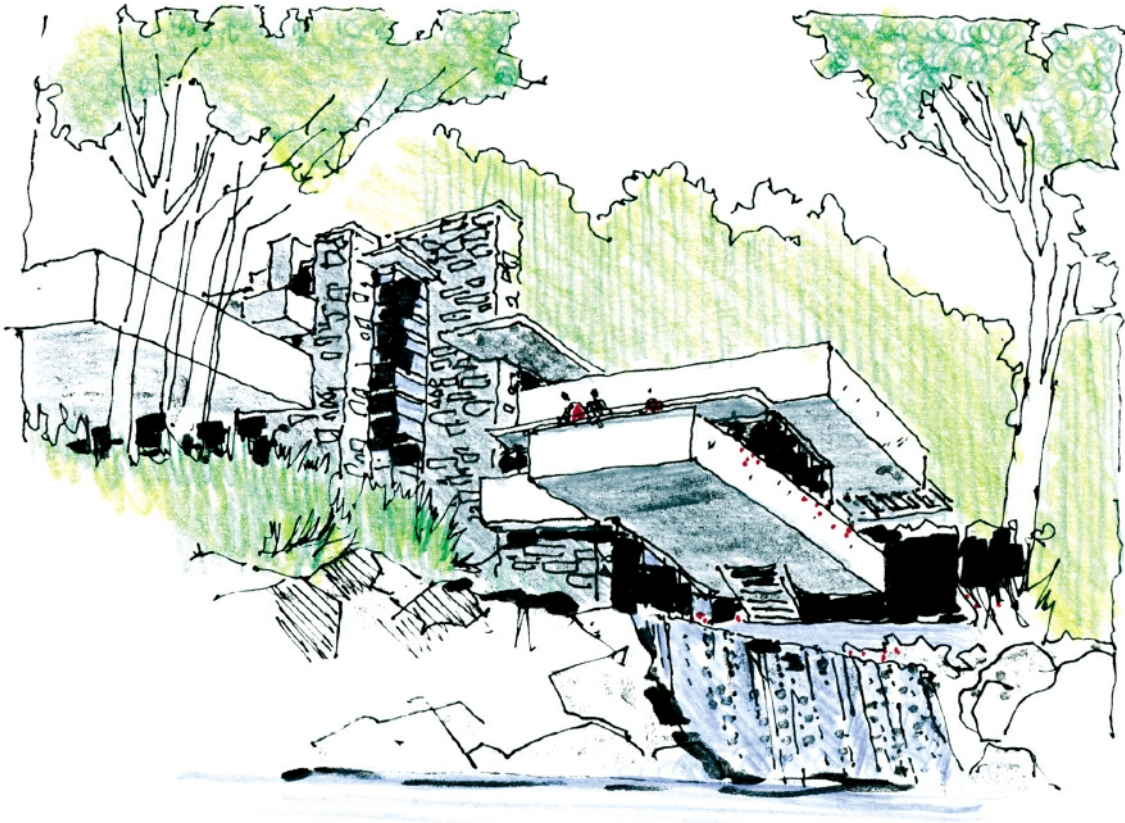


Ralph Rapson on Frank Lloyd Wright

2013-03-21

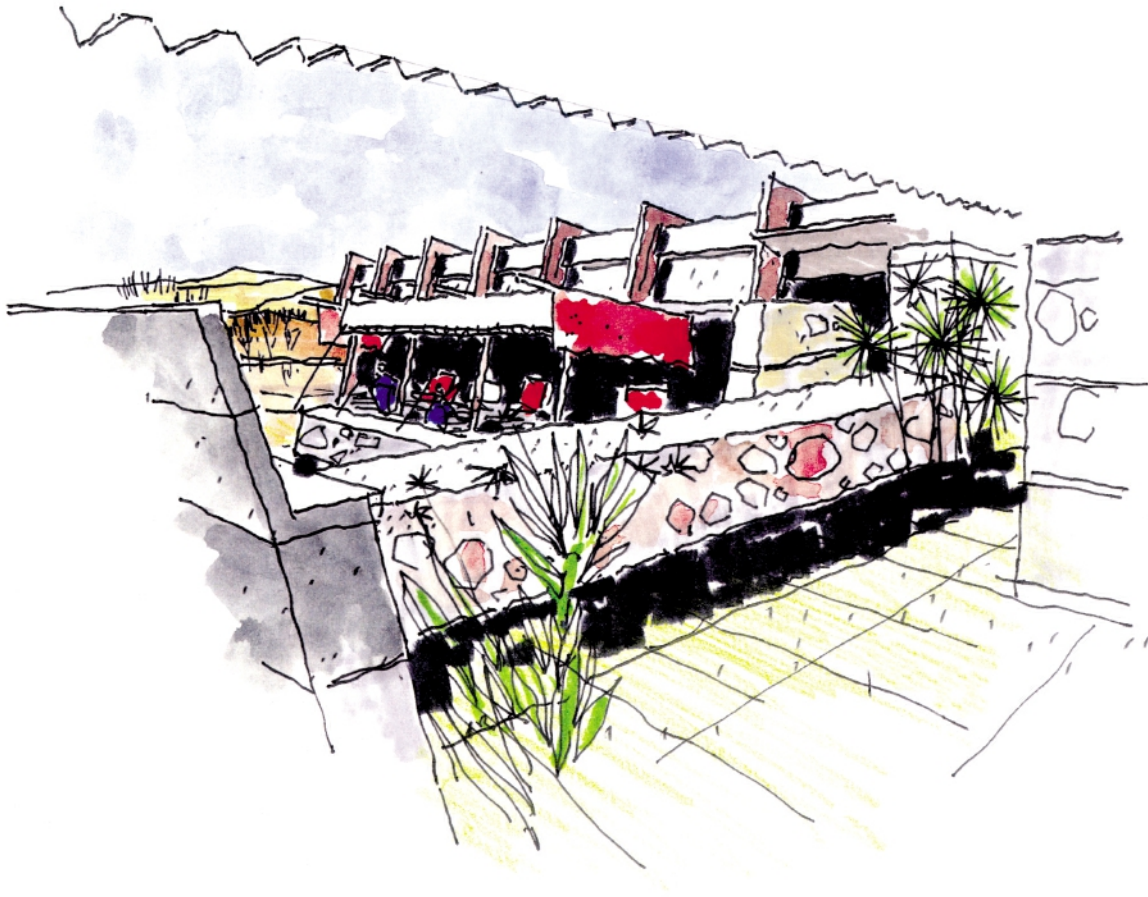


[Fallingwater](#), near Ohiopyle, Pennsylvania, designed by [Frank Lloyd Wright](#), 1934, 1938, 1948.

Color sketch by [Ralph Rapson](#), from [Ralph Rapson Sketches and Drawings from Around the World](#), courtesy of the [Afton Press](#).

"While a student at Michigan, I traveled to Taliesin with two of my peers to meet the great [Frank Lloyd Wright](#). The architect had started a fellowship program at Taliesin, where students worked and studied in the shadow of the master.

"While I admired Wright's designs, his Spring Green, Wisconsin retreat seemed to me too somber and monastic. There wasn't the laughter, joy, and chaos that I was used to.



[Taliesin West](#), in Scottsdale, Arizona, designed by [Frank Lloyd Wright](#), 1937 onward.

Color sketch by [Ralph Rapson](#), from [Ralph Rapson Sketches and Drawings from Around the World](#), courtesy of the [Afton Press](#).

Wright, meantime, seemed to realize that we didn't have sufficient money to attend Taliesin and made my friends and I the butt of a screed on the perils of architectural education." "Years later, whenever I encountered him at Cranbrook or the University of Minnesota, he would look me up and down and say, 'So this is where you ended up.'"

"While I appreciate his work greatly and have since encountered a house he built in Okemos, Michigan, near my hometown of Alma, I have never attempted—nor should others—to use his personal architectural vocabulary." — Ralph Rapson



[Price Tower](#), in Bartlesville, Oklahoma, designed by [Frank Lloyd Wright](#), 1952 to 1956

Color sketch by [Ralph Rapson](#), from [Ralph Rapson Sketches and Drawings from Around the World](#), courtesy of the [Afton Press](#).

